

ENG 0/00

PARTS MANUAL

PMS29ENG.000

HYDRAULIC HAMMER

RAMMER S 29

RAMMER S 29 CITY

SERIAL NO.

29AAA0363-UP

29ADA0363-UP

TABLE OF CONTENTS

1. Housing unit S 29	4
2. Housing unit S 29 CITY	5
3. Low pressure accumulator S 29	6
4. High pressure accumulator S 29	7
5. Pressure adjusting valve S 29.	8
6. Tie rod S 29	9
7. Valve body and distributor S 29	10
8. Cylinder and piston S 29.	11
9. Front head S 29.	12
10. Lower tool bushing S 29	13
11. Seal set S 29	14

GENUINE RAMMER SPARE PARTS

Rammer genuine spare parts are designed and manufactured by using the latest technological knowledge and engineering skills. Rammer spare parts are made of the best available materials with the most advanced manufacturing techniques.

It is important that you use only genuine Rammer spare parts, to ensure easy operation, maintenance and repair of the product. Please note that eventual warranty claims will be handled only if you have used genuine Rammer parts in your Rammer.

LOCATION OF THE SERIAL NUMBER

It's important to make correct reference to the serial number of the product when ordering spare parts. Identification of serial number is the only proper means of maintaining and identifying parts for a specific product. The location of equipment serial number is pointed in "Operation and maintenance" manual.

SPARE PART ORDERS

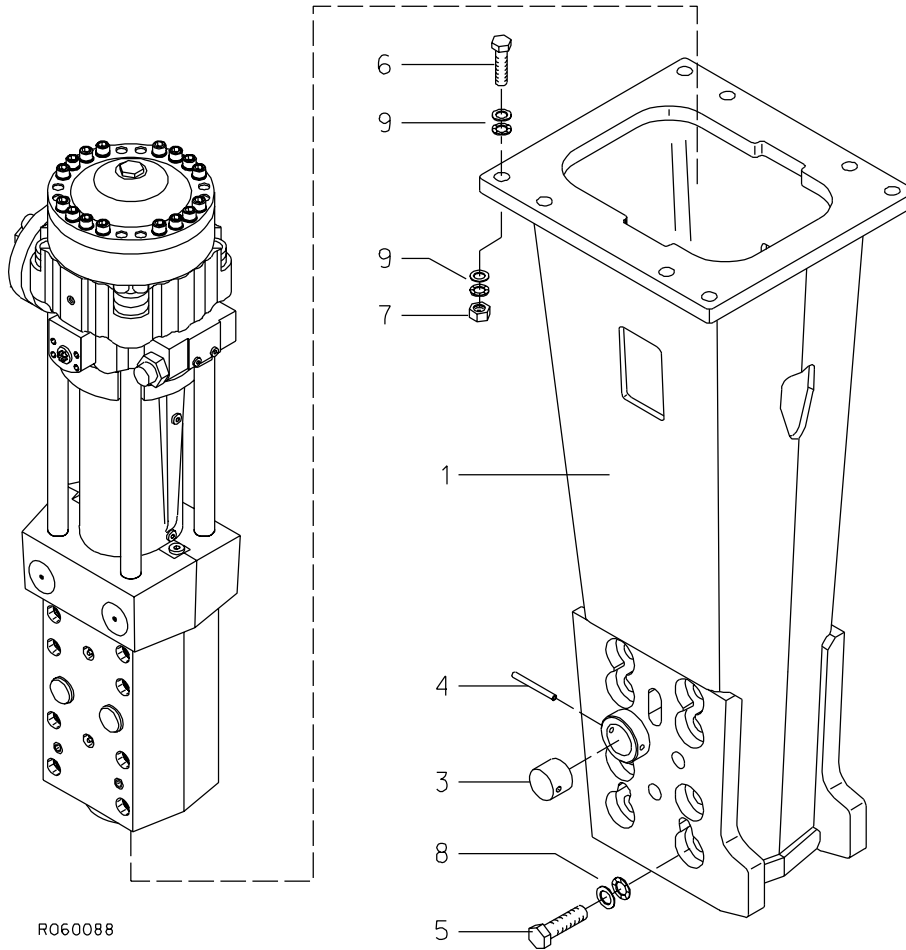
Quick spare part deliveries are secured by exact orders.

Required information:

- Name of customer and contact person
 - Order number (when available)
 - Delivery address
 - Mode of delivery (air mail etc.)
 - Required delivery date
 - Invoicing address
 - Model and serial number of the product
 - Name, number and required amount of spare parts
-

PARTS

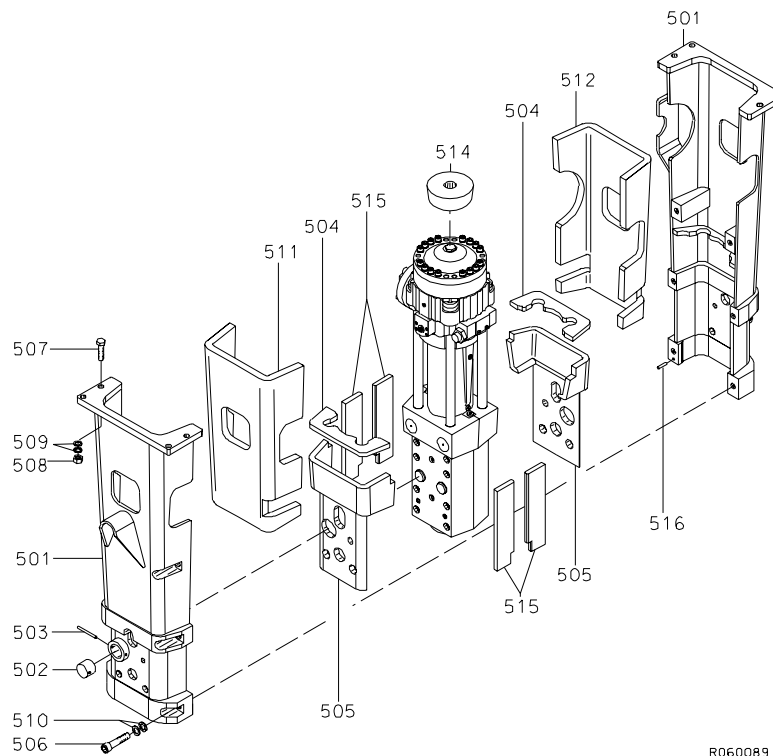
1. HOUSING UNIT S 29



R060088

Item	Description	Part no.	Specification	Note	Qty
1	Housing	103650			1
3	Buffer	400430			2
4	Split pin	904015	10x100 DIN 1481		2
5	Hex. screw	901886	M30x90.10.9 DIN 931		16
6	Hex. screw	901445	M24x90.10.9 DIN 931		8
7	Hex. nut	91030	M24-8 DIN 934		8
8	Lock washer	90598	M33 NORD-LOCK		16
9	Lock washer	91038	M24 NORD-LOCK		16
Kit	Label set	104436			1

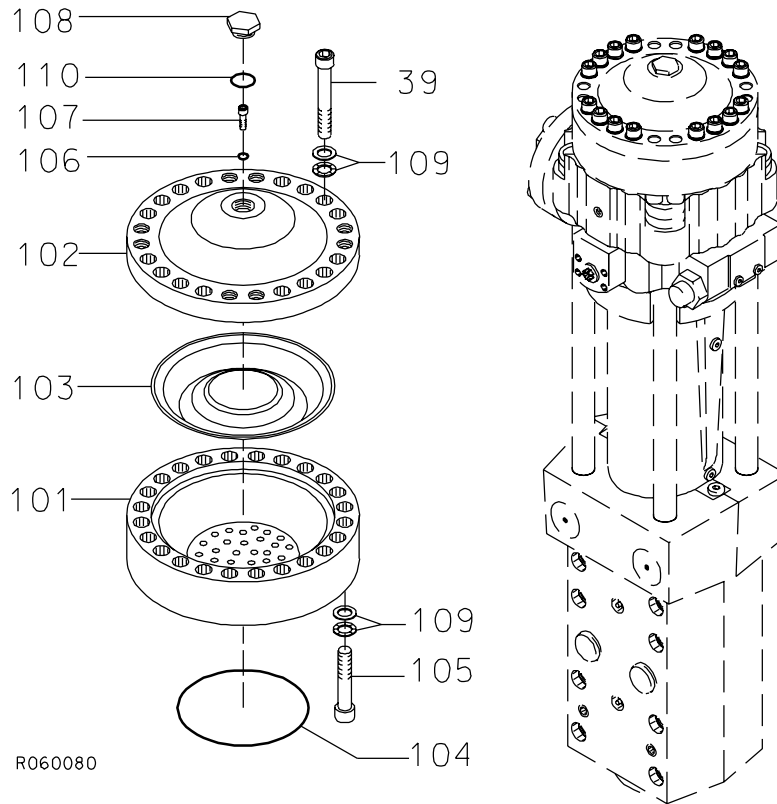
2. HOUSING UNIT S 29 CITY



R060089

Item	Description	Part no.	Specification	Note	Qty
501	Housing plates	400454			1
502	Buffer	400430			2
503	Split pin	904015	10x100 DIN 1481		2
504	Pad	300607			2
505	Damper	100408			2
506	Hex. socket screw	91058	M24x90-8.8 DIN 912		6
507	Hex. screw	91022	M20x90-8.8 DIN 931		8
508	Hex. nut	91017	M20-8 DIN 934		8
509	Lock washer	91010	M20 NORD-LOCK		16
510	Lock washer	91038	M24 NORD-LOCK		6
511	Upper muffler, left	100687			1
512	Upper muffler, right	100688			1
514	Buffer	300910			1
515	Muffler plate	300817			4
516	Parallel pin	901101	10m6x70 DIN 6325		2
Kit	Label set	300957			1

3. LOW PRESSURE ACCUMULATOR S 29



R060080

Item	Description	Part no.	Specification	Note	Qty
1	Low pressure accumulator (incl. parts 101-110)	100661			1
101	Accumulator bottom	100662			1
102	Accumulator cover	100663			1
103	Membrane	300909			1
104	O-ring	90002	D164	*	1
105	Hex. socket screw	900028	M20x100-8.8 DIN 912		8
106	Usit-ring	90056	D9	*	1
107	Filling plug	042074			1
108	Shield plug	400300			1
109	Lock washer	91010	M20 NORD-LOCK		24
110	O-ring	910006	D23	*	1
39	Hex. socket screw	900029	M20x130-8.8 DIN 912		16
	*) Are included in seal set				

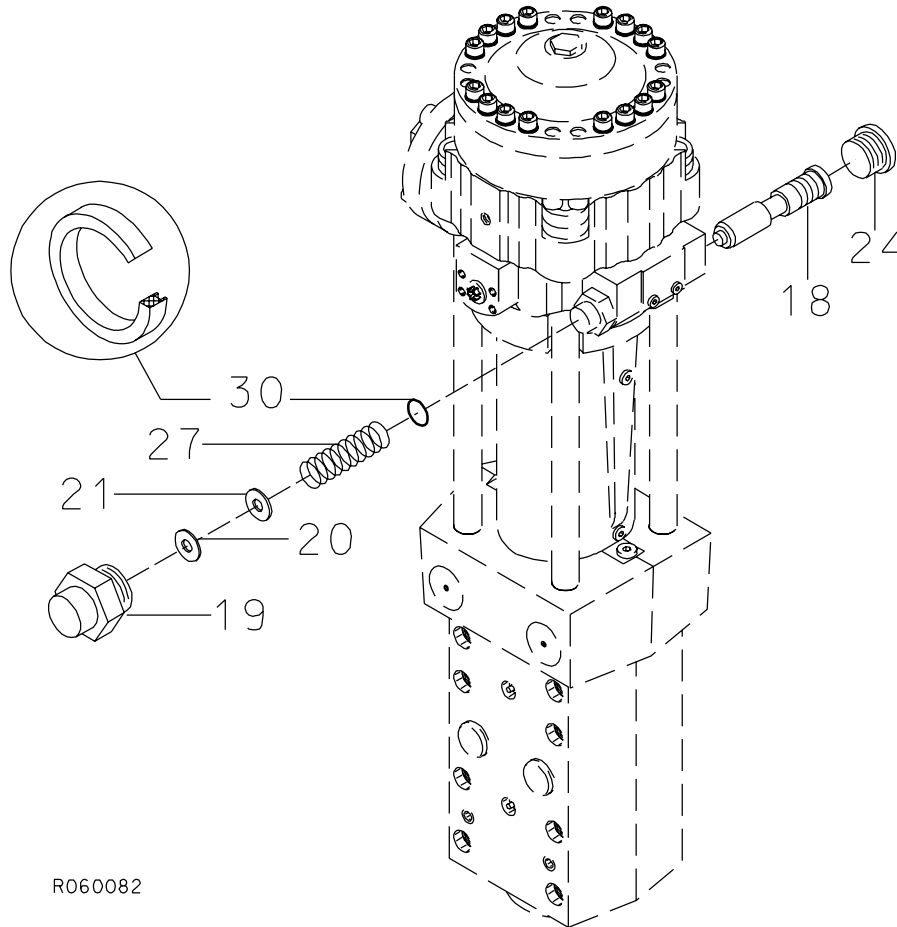
4. HIGH PRESSURE ACCUMULATOR S 29



R060081

Item	Description	Part no.	Specification	Note	Qty
48	High pressure accumulator (incl. parts 4801-4810)	200527			1
4801	Accumulator bottom	200528			1
4802	Accumulator cover	200529			1
4803	Membrane	300177			1
4804	O-ring	90032	D120	*	1
4805	Hex. socket screw	91006	M16x60-8.8 DIN 912		4
4806	Usit-ring	90056	D9	*	1
4807	Filling plug	42074			1
4808	Shield plug	400300			1
4809	Lock washer	90597	M16 NORD-LOCK		4
4810	O-ring	910006	D23	*	1
50	Hex. socket screw	900005	M20x90-8.8 DIN 912		6
46	Lock washer	91010	M20 NORD-LOCK		6
	*) Are included in seal set				

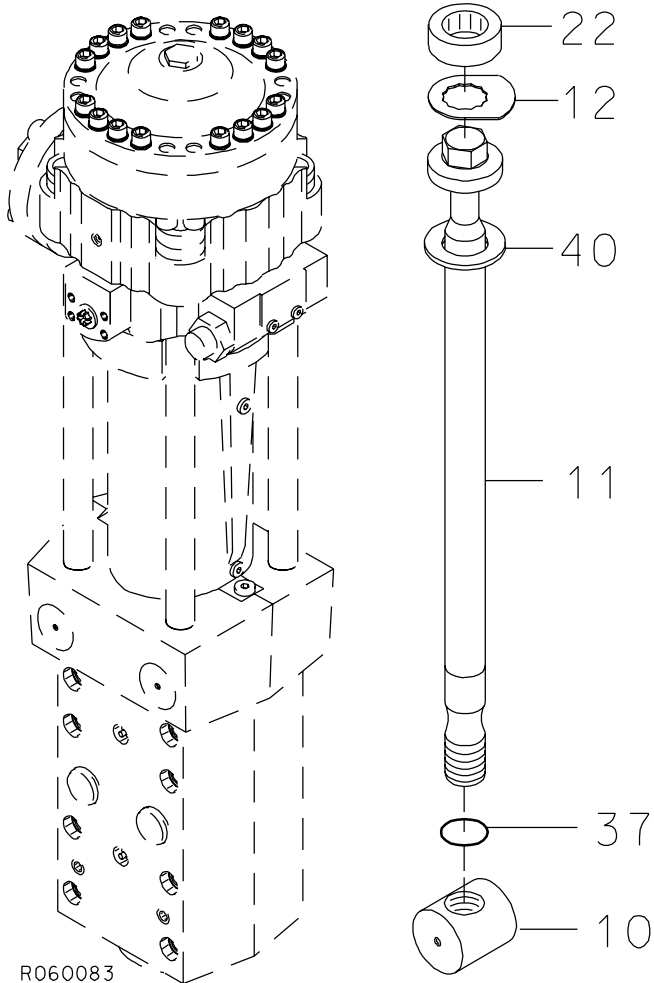
5. PRESSURE ADJUSTING VALVE S 29



R060082

Item	Description	Part no.	Specification	Note	Qty
18	Pressure adjusting spool	300506			1
19	Spring housing	400309			1
20	Shim plate	41793	S=1		X
21	Shim plate	41794	S=0.5		X
24	Flange plug	90410	R1		1
27	Spring	920008	D26x65		1
30	Seal	911010	D22	*	1
	*) Are included in seal set				

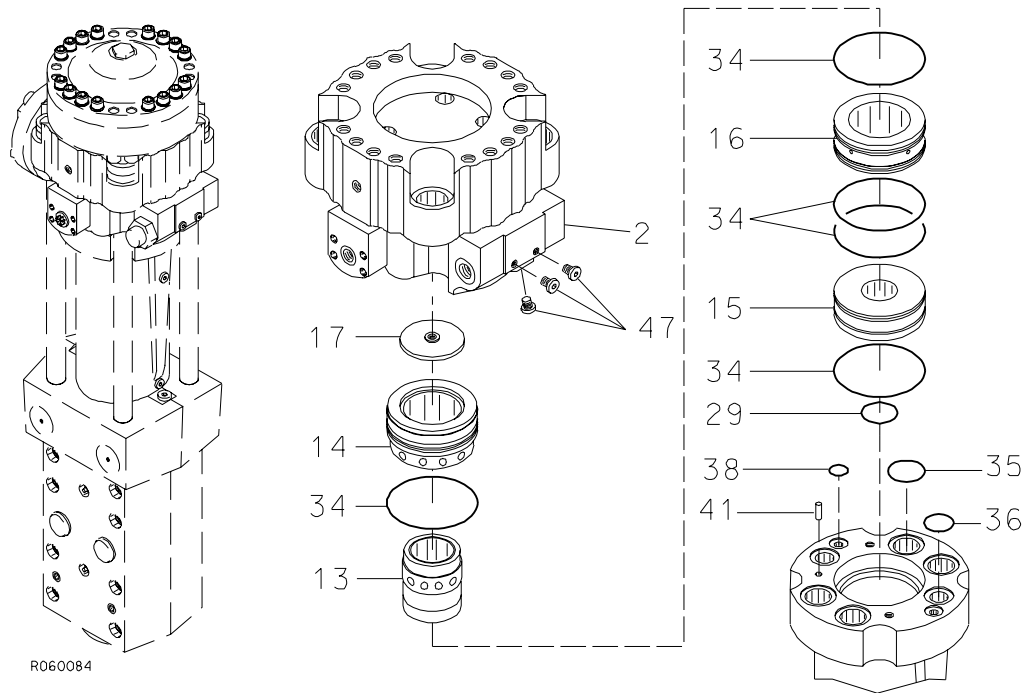
6. TIE ROD S 29



R060083

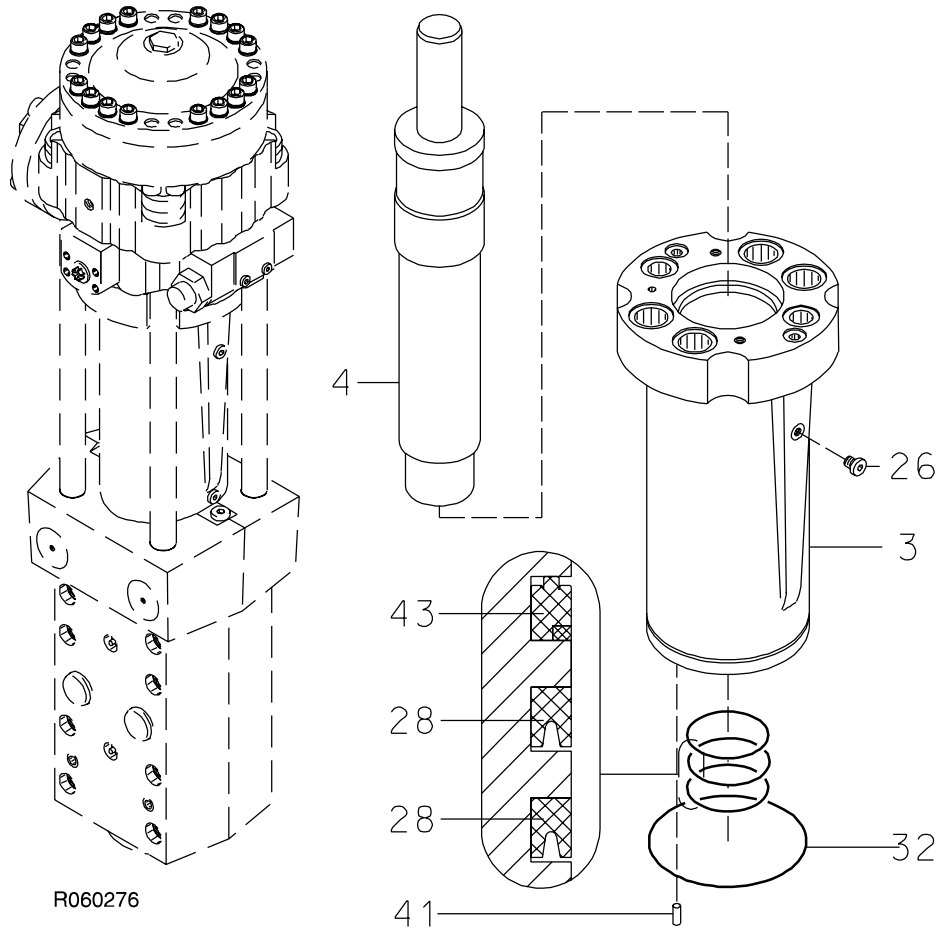
Item	Description	Part no.	Specification	Note	Qty
10	Tie rod nut	300996			4
11	Tie rod	200561			4
12	Lock plate	400362			4
22	Rubber ring	400364			4
37	O-ring	910019	D42	*	4
40	Washer	400686	D42		4
	*) Are included in seal set				

7. VALVE BODY AND DISTRIBUTOR S 29



Item	Description	Part no.	Specification	Note	Qty
2	Valve body (incl. part 47)	100327			1
13	Distributor	200363			1
14	Assembly ring	200364			1
15	Steering ring	300498			1
16	Slide ring	200382			1
17	Puller plate	300523			1
29	Seal	911005	D50	*	1
34	O-ring	90032	D120	*	5
35	O-ring	90007	D44	*	4
36	O-ring	90017	D34	*	2
38	O-ring	90001	D20	*	2
41	Parallel pin	90357	8m6x24 DIN 6325		1
47	Plug	41658			3
	*) Are included in seal set				

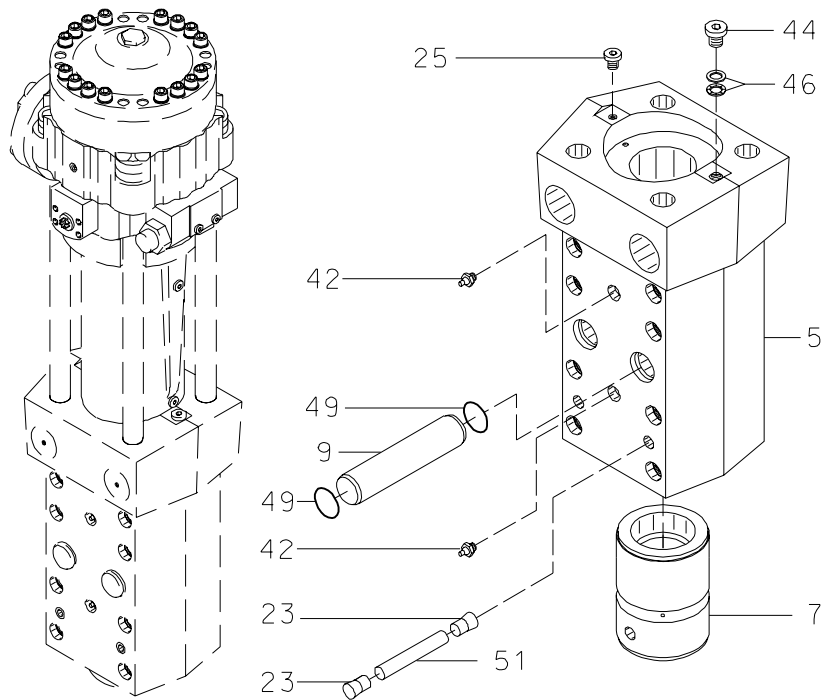
8. CYLINDER AND PISTON S 29



R060276

Item	Description	Part no.	Specification	Note	Qty
3	Cylinder (incl. part 26)	100328			1
4	Piston	100321			1
26	Flange plug	93203	R1/8		1
28	Seal	911033	D90	*	2
32	O-ring	910012	D170	*	1
41	Parallel pin	90357	8m6x24 DIN 6325		1
43	Seal	911015	D90	*	1
	*) Are included in seal set				

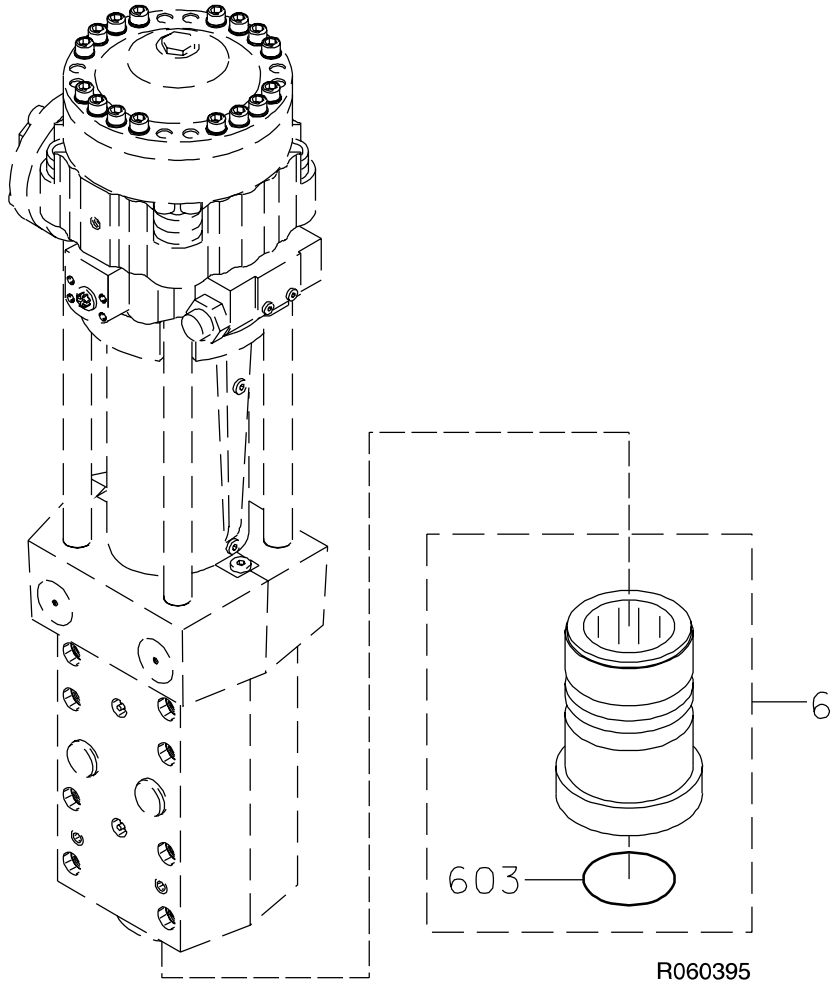
9. FRONT HEAD S 29



R060353

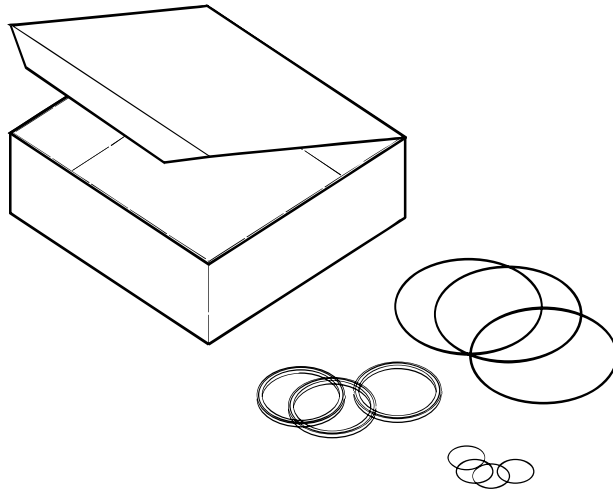
Item	Description	Part no.	Specification	Note	Qty
5	Front head (incl. parts 25, 42, 44 and 46)	100399			1
7	Upper tool bushing	101027			1
9	Tool retaining pin	300511	D50		2
23	Rubber plug	101169			4
25	Flange plug	90444	R3/8		1
42	Grease nipple	90201	R1/8		2
44	Flange plug	90424	R1/2		1
46	Lock washer	91010	M20 NORD-LOCK		1
49	O-ring	90019	D49	*	4
51	Retaining pin	400456	D21		2
	*) Are included in seal set				

10. LOWER TOOL BUSHING S 29



Item	Description	Part no.	Specification	Note	Qty
6	Lower tool bushing (incl. part 603)	101025			1
603	Seal	400498	D95	*	1
	*) Are included in seal set				

11. SEAL SET S 29

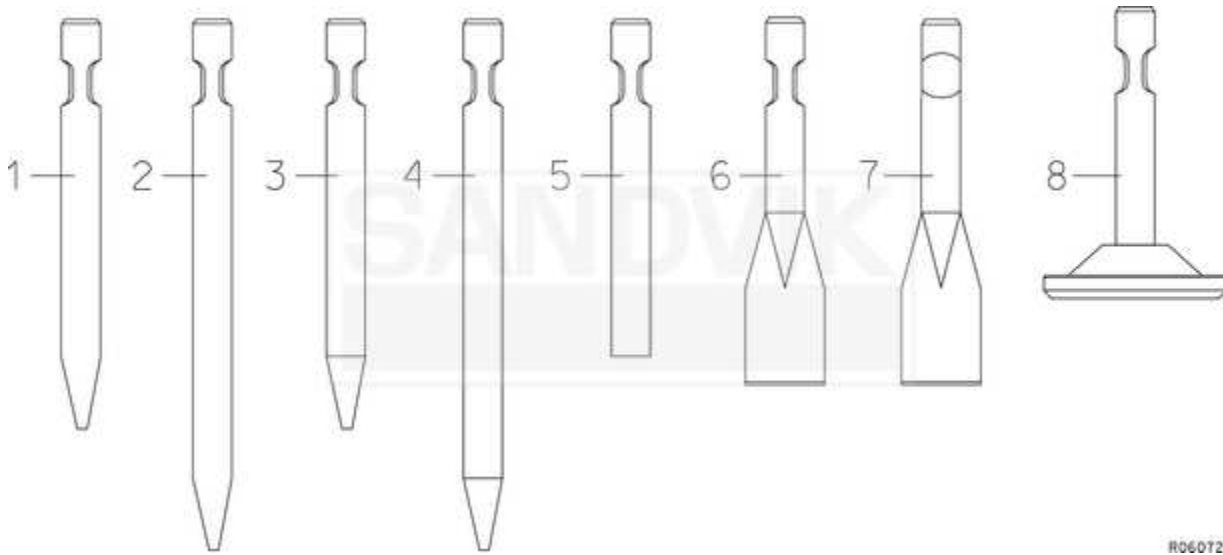


R060012

Item	Description	Part no.	Specification	Note	Qty
Kit	Seal set (incl. parts 1-16)	400668			1
1	Seal	911033	D90		2
2	Seal	911005	D50		1
3	Seal	911010	D22		1
4	O-ring	910012	D170		1
5	O-ring	90032	D120		6
6	O-ring	90007	D44		4
7	O-ring	90017	D34		2
8	O-ring	910019	D42		4
9	O-ring	90001	D20		2
10	Seal	911015	D90		1
11	O-ring	90019	D49		4
12	O-ring	90002	D164		1
13	Usit-ring	90056	U8.7-14-1		2
14	O-ring	910006	D23		2
16	Seal	400498	D95		1

Tool

[29AAA0005-UP] [29ADA0005-UP] [29ATA0005-UP]



R060721

Item	Description	Part no.	Specification	Note	Qty
<u>1</u>	Chisel	291	L = 900 mm, W = 46 kg, D = 95 mm		1
<u>2</u>	Long Chisel	292	L = 1050 mm, W = 55 kg, D = 95 mm		1
<u>3</u>	Moil point	293	L = 900 mm, W = 44 kg, D = 95 mm		1
<u>4</u>	Long moil point	298	L = 10500 mm, W = 53 kg, D = 95 mm		1
<u>5</u>	Blunt	294	L = 800 mm, W = 37 kg, D = 95 mm		1
<u>6</u>	Spade, parallel to boom	295	L = 830 mm, W = 39 kg, Width = 200 mm		1
<u>7</u>	Spade, transverse to boom	296	L = 830 mm, W = 39 kg, Width = 200 mm		1
<u>8</u>	Compacting plate	297	L = 800 mm, W = 95 kg, Plate D = 350 mm		1

SANDVIK TAMROCK CORP.
Breakers Lahti
Taivalkatu 8, P.O. Box 165, FIN-15101 Lahti, Finland
Phone Int. +358 205 44 161, Telefax Int. +358 205 44 160,
Internet <http://www.rammer.com>

15-40-14000-33-168-0
18-40-14000-45-76-196